

Light Collective is the next generation of lighting consultancy. Working inside and outside of the standard architectural design framework, light collective is fuelled by a passion for light, collaboration and creativity.

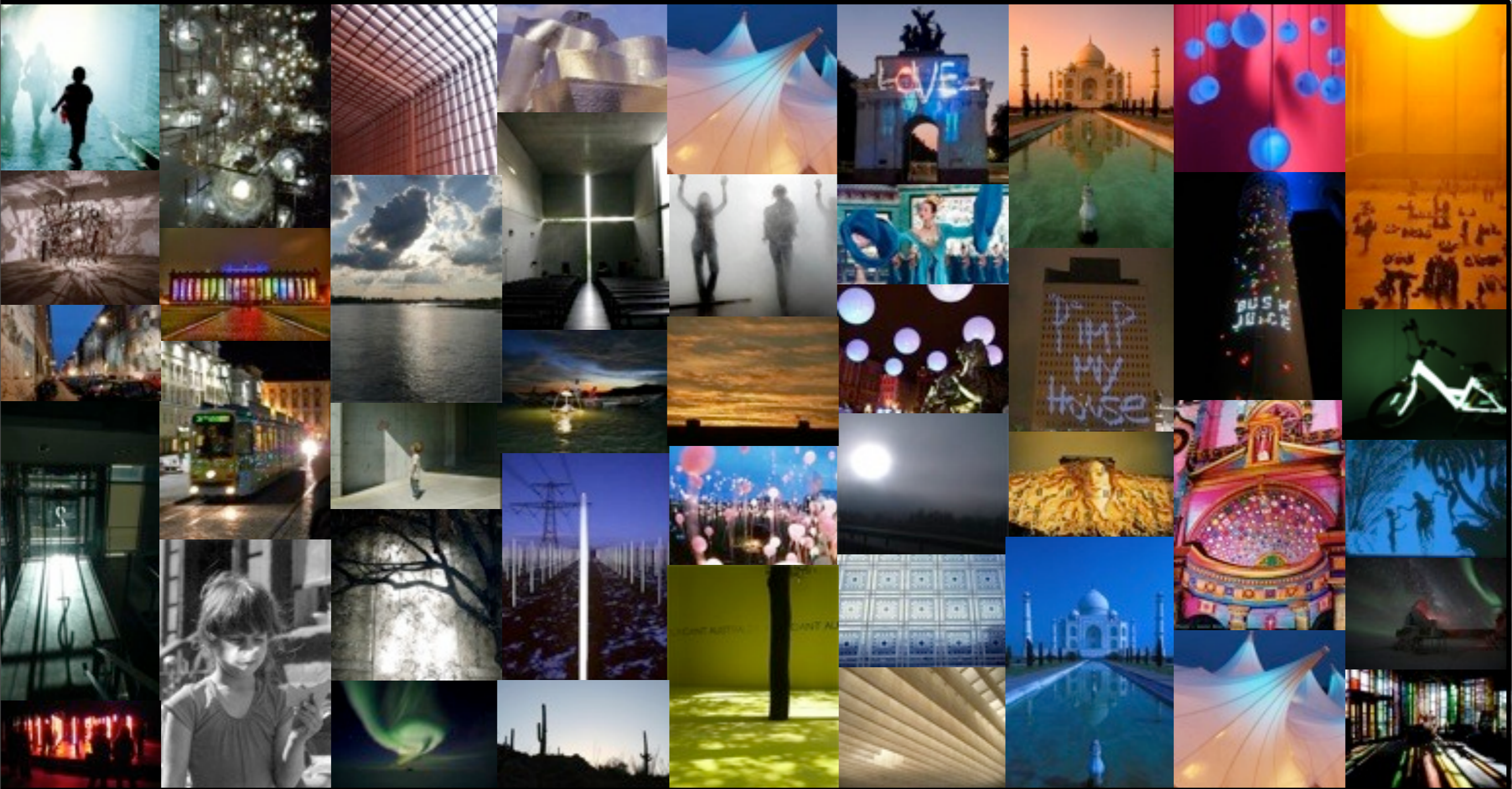
Our aspiration is to understand, interpret and work with light in all of its contexts - artistic, social, architectural, cultural and physiological. We believe that light is an openly accessible medium that can be used to engage and inspire others - both professionals and non-professional.

Our objective is that Light Collective will become an umbrella for like-minded and inspired people to collaborate in a multitude of ways and in different formats. From architectural lighting design, art and film to education and professional development, Light Collective will become a home for, or the foundations from which, many projects can be constructed – all with our fundamental passion at their very heart: LIGHT.

We aim to spread our enthusiasm and passion for light to all who encounter it whether this be through architectural lighting design, collaboration with artists, community engagement, light installations or film and other media.



- #1 Be evangelical about light
- #2 Innovate
- #3 Inspire
- #4 Engage
- #5 Educate
- #6 Encourage collectivism
- #7 Share knowledge
- #8 Promote daylight
- #9 Live it or leave it
- #10 Embrace darkness
- #11 Make a dent in the universe
- #12 Challenge convention



We are inspired by light in all it's forms and applications - in nature, in art, in film, in architecture and in urban intervention. These images capture some of the playfulness, power and emotion that can be experiences with light. Our mission is to allow this passion for light to infiltrate our work at every level.

Walthamstow Town Square



Royal Albert Hall



Cardinal Place, London



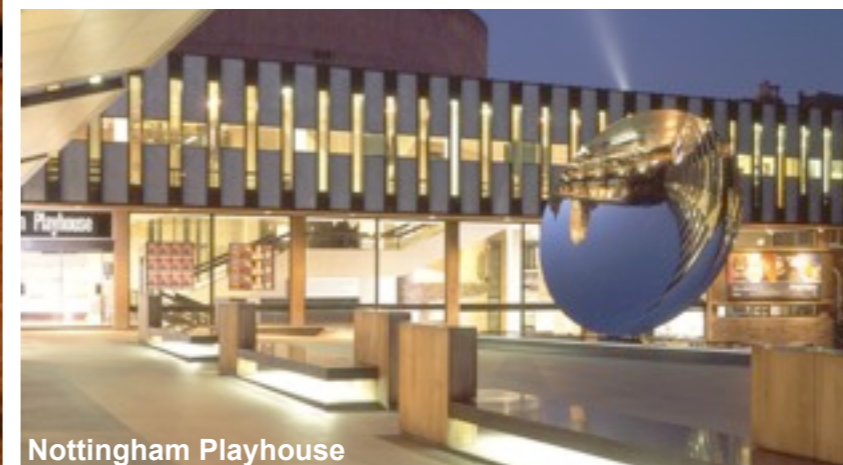
Princesshay Exeter



Princesshay Exeter



Cardinal Place, London



Nottingham Playhouse

URBANLIGHT

EXTERIORLIGHT

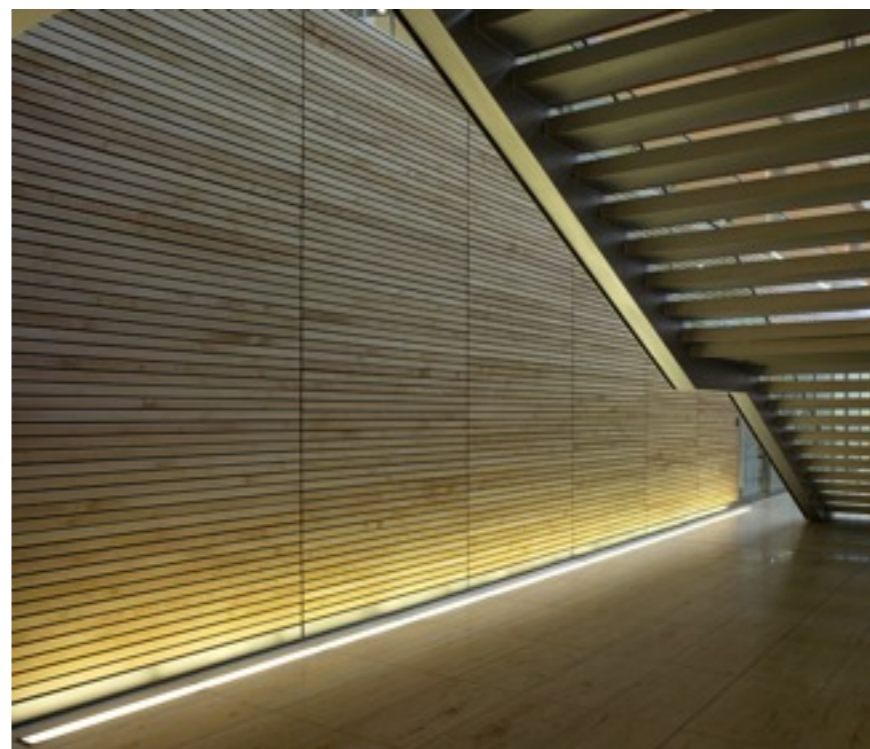
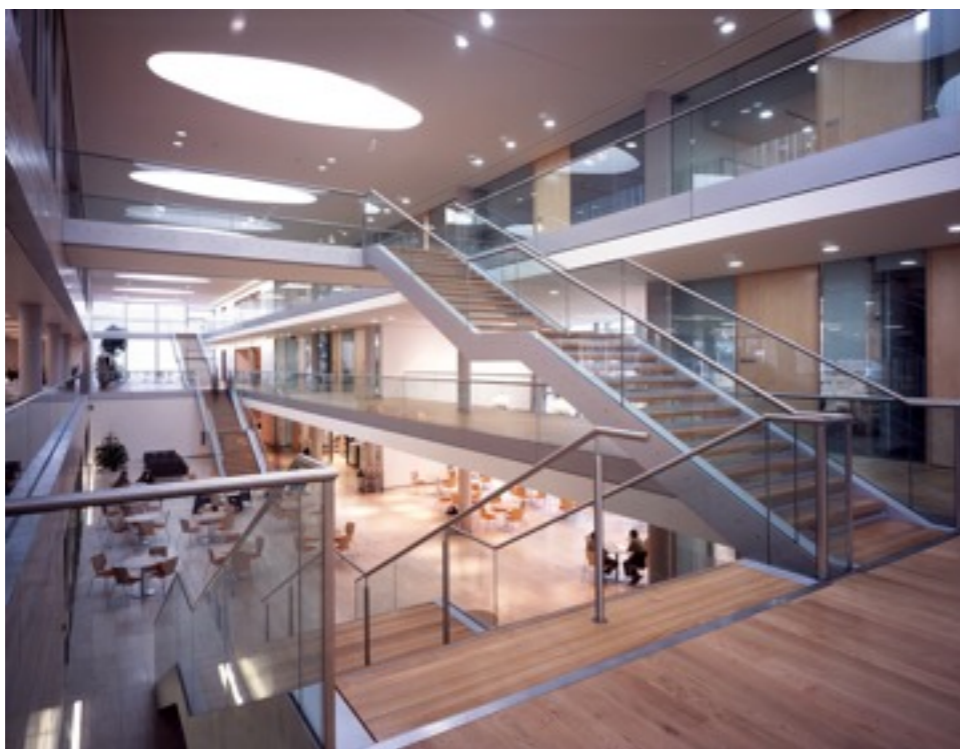




BRANDBLIGHT



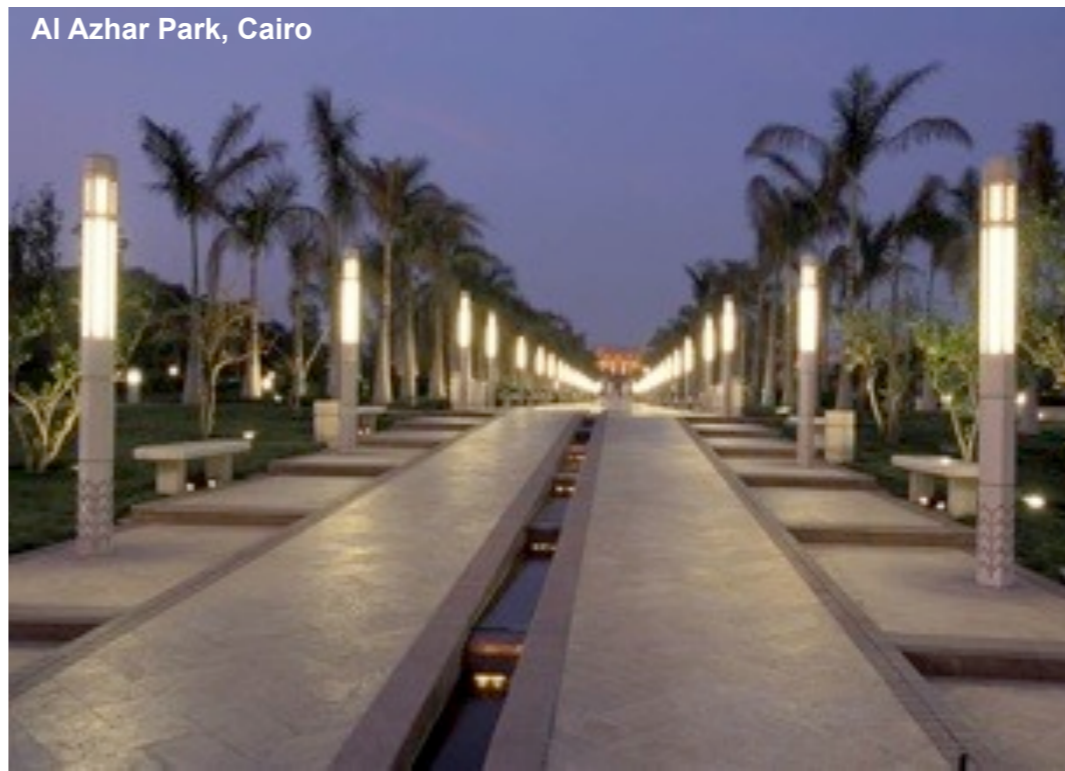
**OFFICE
LIGHT**



Al Azhar Park, Cairo



Al Azhar Park, Cairo



Westin Hotel, Warsaw



Al Azhar Park, Cairo

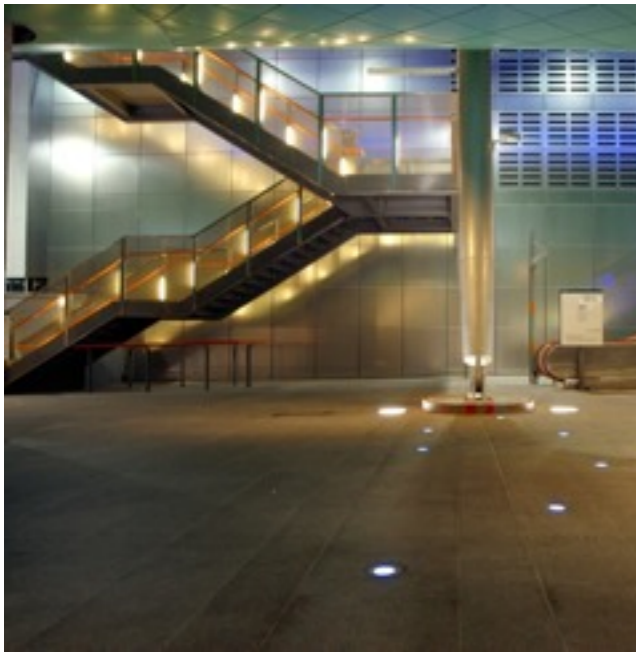


Somerset House, London



Heron Quays Station, London

URBANLIGHT



URBANLIGHT



Prince of Wales Theatre, London



The Coliseum, London



Princesshay Exeter



Princesshay Exeter



Princesshay Exeter



Princesshay Exeter

URBANLIGHT

URBANLIGHT



Cornmill Gardens, London



Cornmill Gardens, London



Cornmill Gardens, London



Chapelfields Norwich



Chapelfields Norwich



Liverpool ONE



Chapelfields Norwich

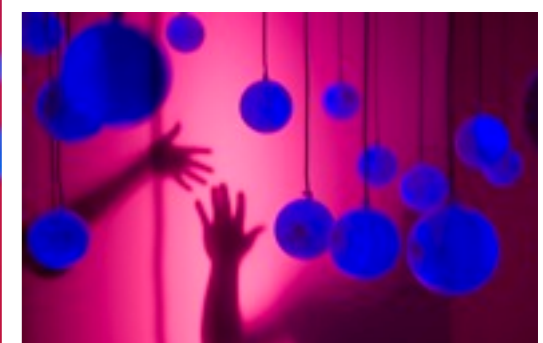
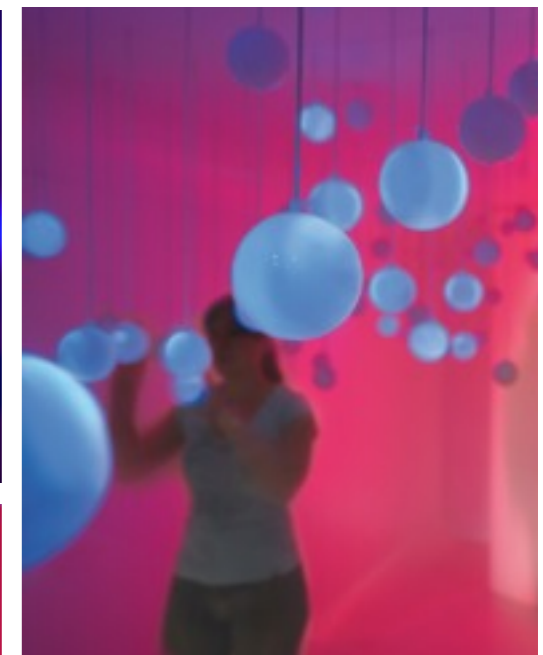
RETAILLIGHT



Liverpool ONE



Liverpool ONE



LIGHTINSTALLATIONS

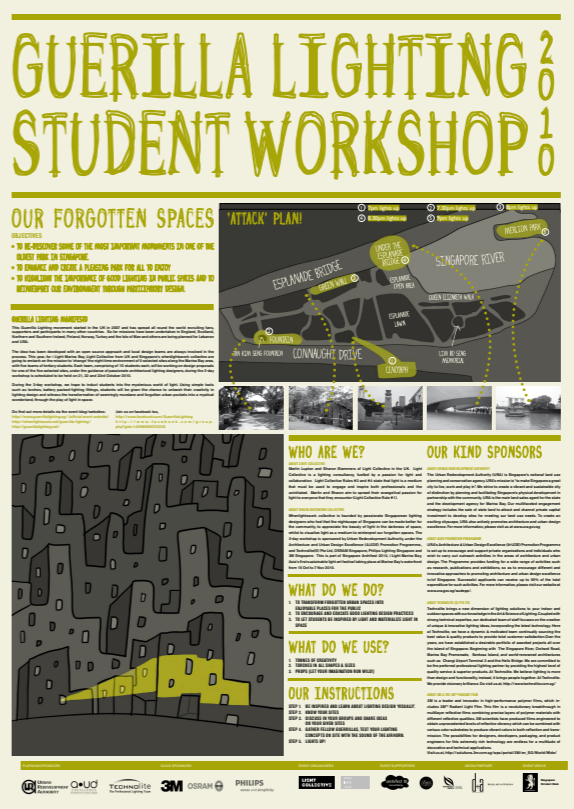
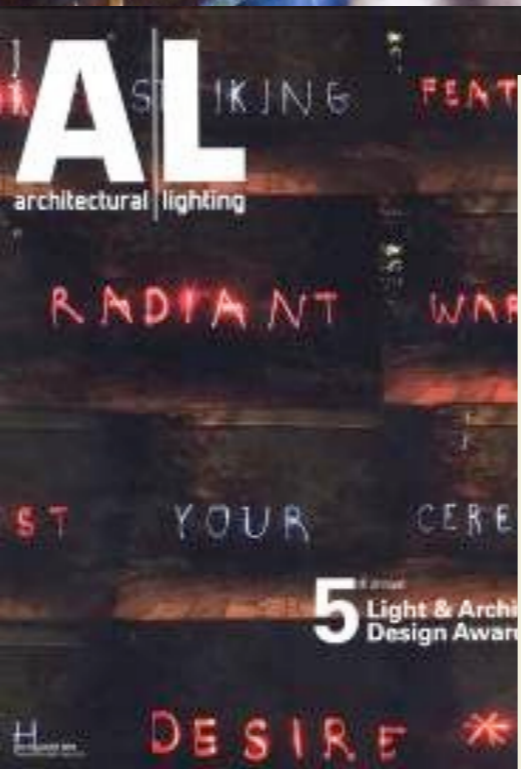
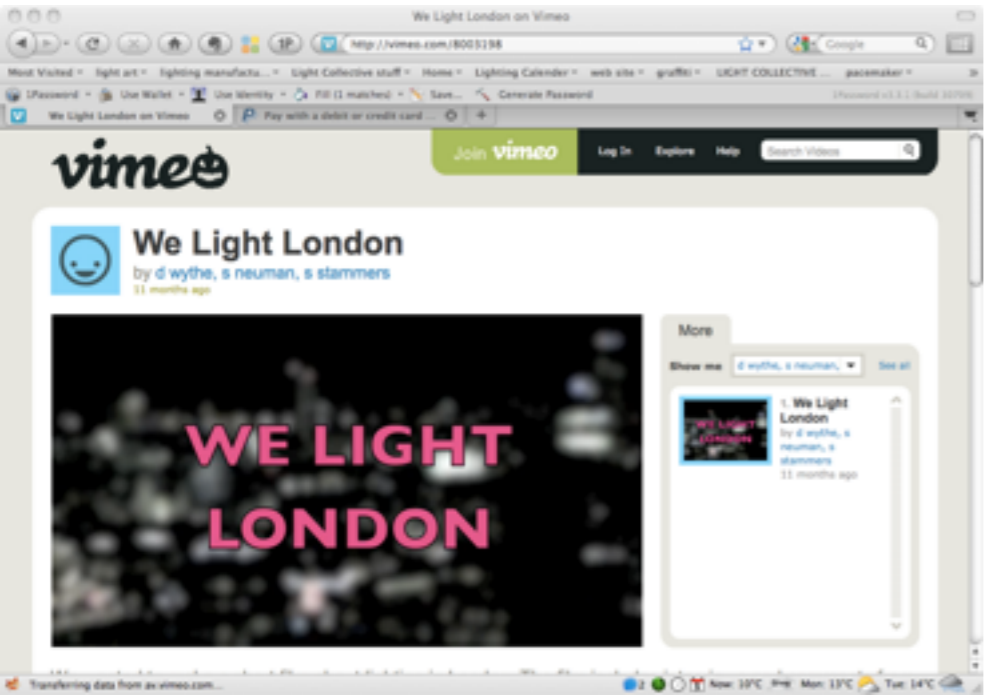
[Social Light Movement \(Link\)](#)



[GuerrillaLighting.net](#)



[We Light London \(Link\)](#)



LIGHTINITIATIVES

[Mondo Arc - Inspirations \(link\)](#)



[Lighting Magazine Blog \(link\)](#)



LIGHT JOURNALISM

Tuesday, 26 April 2011

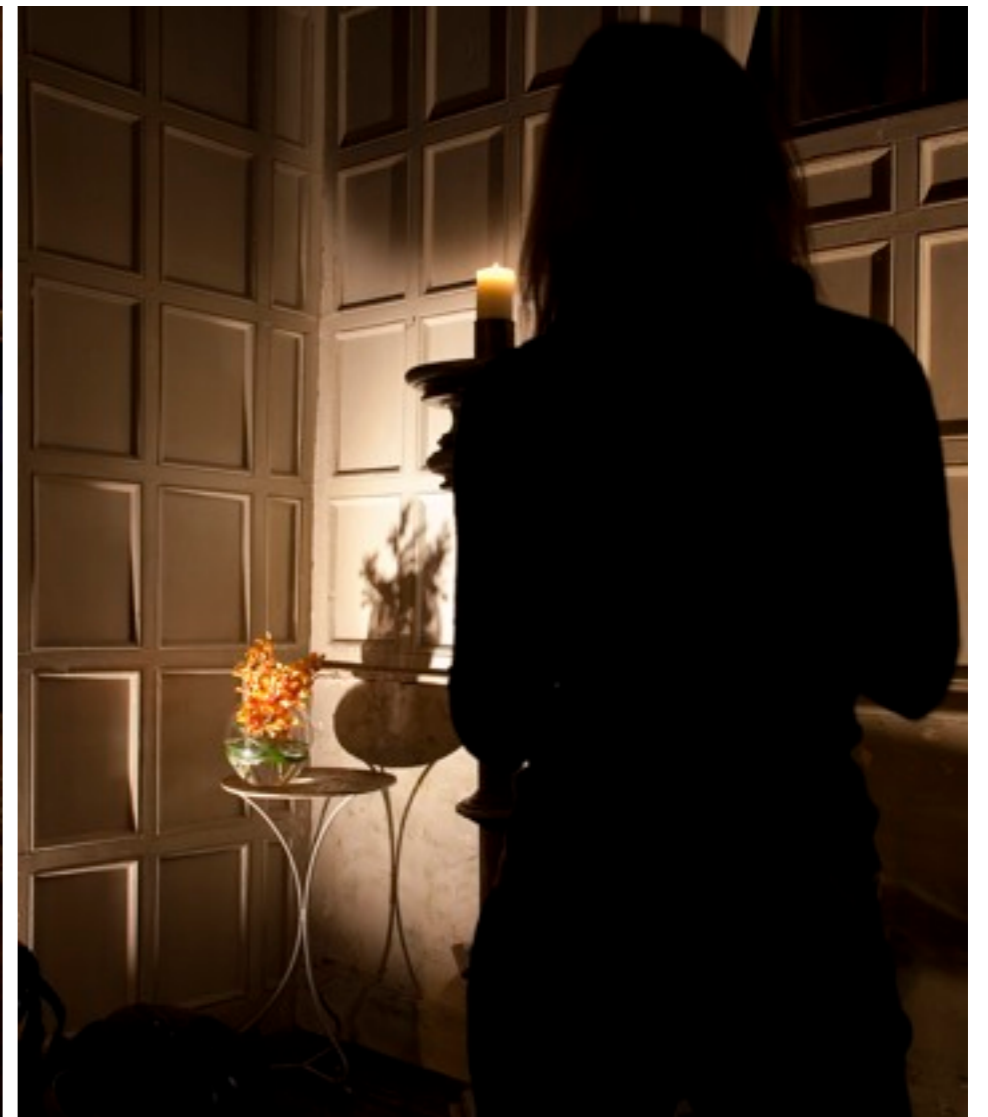


Mirrie Dancers

Guest lighting designers for a community arts project in the Shetland Isles that was a collaboration between Shetland Arts and NK Studio.

RECENT PROJECTS

Tuesday, 26 April 2011

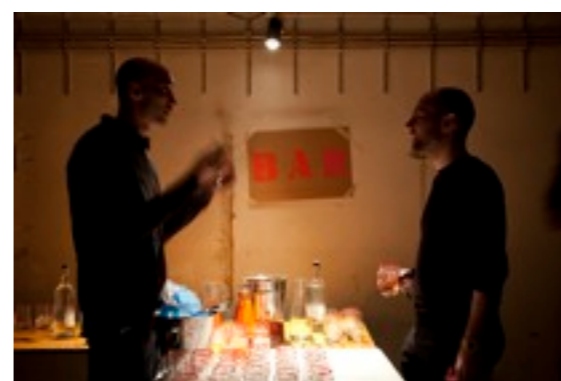


RECENTPROJECTS

Tuesday, 26 April 2011

The Xicato Dining Experience

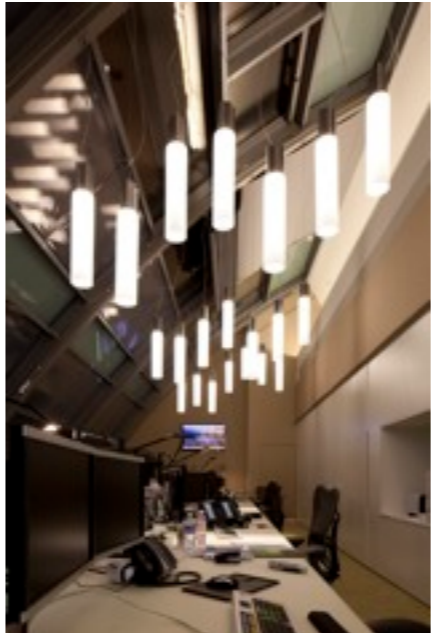
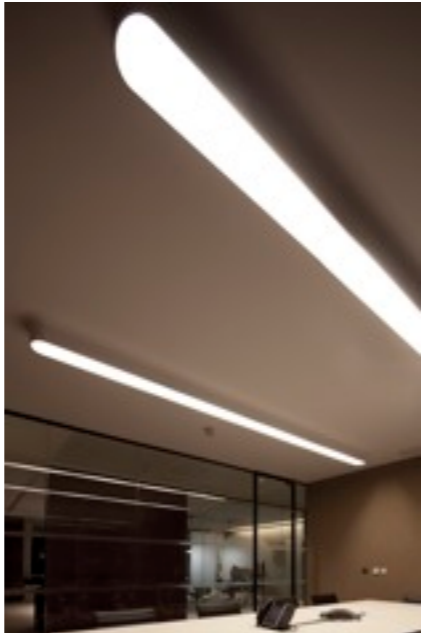
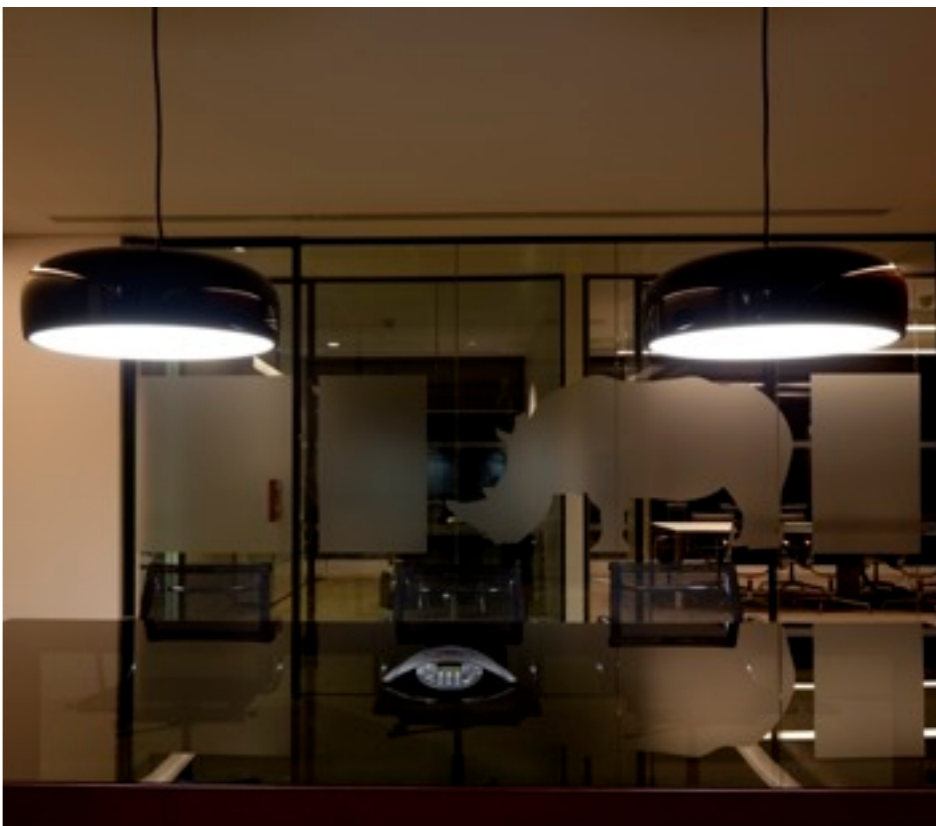
Conversion of a gritty, urban location to an intimate dining experience using innovative high colour rendering, low energy LED modules and custom designed pendants.



The Xicato Dining Experience
The dinner comes to Berlin.

RECENTPROJECTS

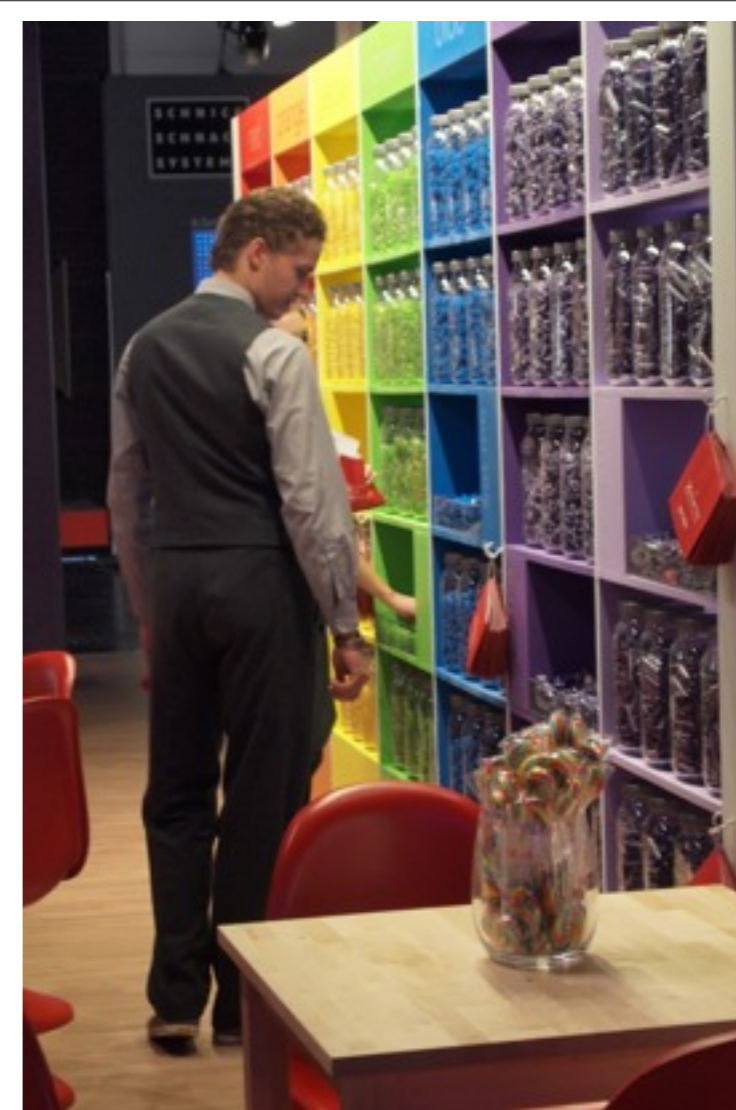
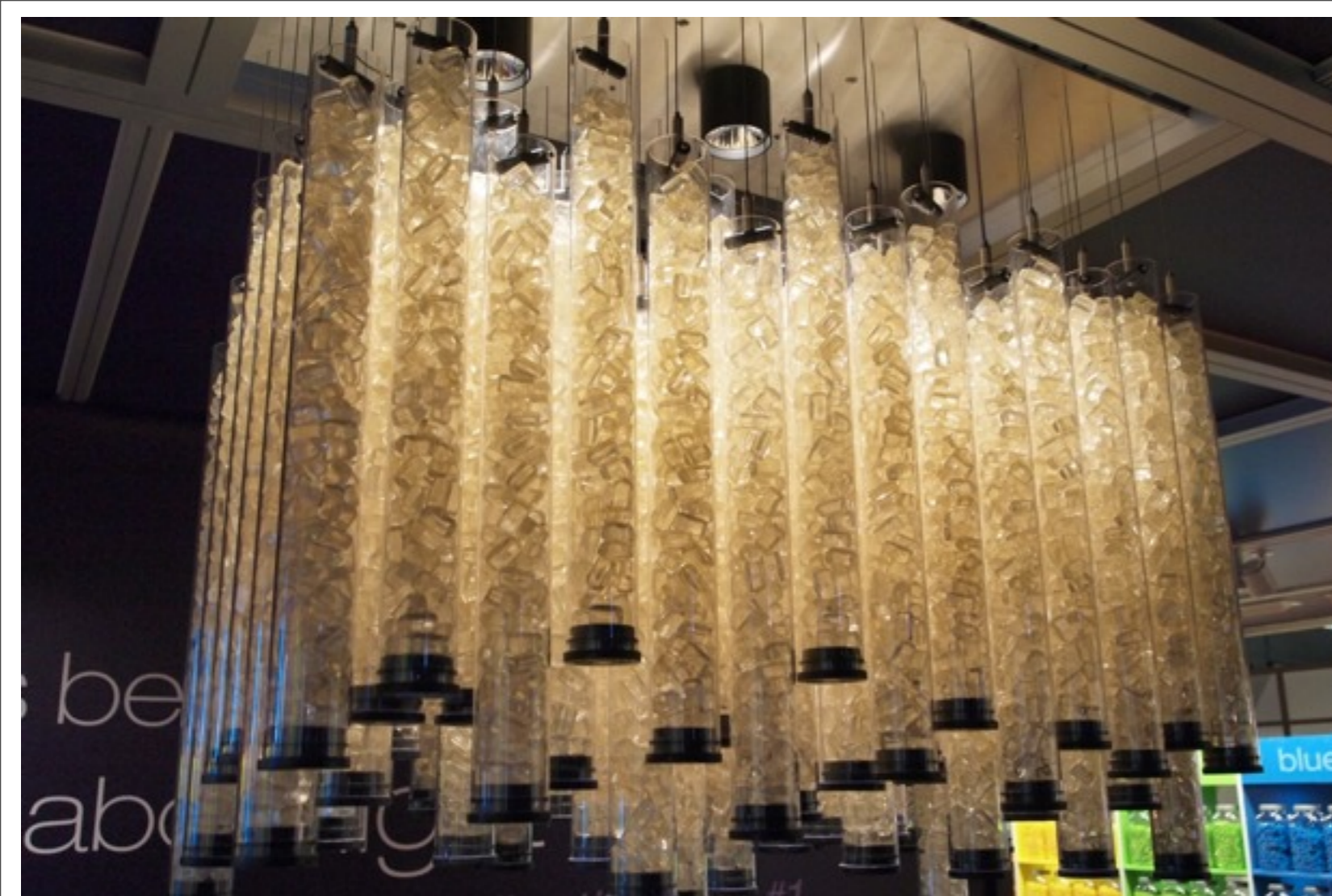
Tuesday, 26 April 2011



Stone Harbour Investment Partners

RECENT PROJECTS

High end, unconventional lighting scheme for global investment manager with entrepreneurial mindset based on a boutique style, low energy approach using LED's through-out.



Xicato Stand, Euroshop 2011

RECENT PROJECTS

To demonstrate the amazing colour rendering properties of the new LED module from Xicato we designed a spectral candy store, including a custom chandelier made from Foxes Glacier Mints



PLDA Workshop GOA 2011

Working with a group of international students to create a temporary lighting installation using recycled materials.

RECENTPROJECTS

Tuesday, 26 April 2011

Martin's interest in lighting began in Academia when he undertook a PhD in Lighting Design at Liverpool School of Architecture. From there he started work at Pinniger & Partners, an independent lighting designer in London. In 2000 Martin was made Design Director at Pinniger & Partners where he worked on a high variety of projects.

In 2002 Martin joined Building Design Partnership to head their specialist lighting team, which he built from 4 designers in London to 22 full time designers and teams in London, Manchester and Dublin. Martin has been involved in many high profile projects including the Cutty Sark, Liverpool One, The Natural History Museum, Westfield London and Westminster Academy.

Martin has earned an international reputation as a passionate ambassador for professional sustainable lighting design. He has arranged and been involved with several guerrilla lighting campaigns that have led to a high level of publicity with the general media as well as the trade press. He has served on several CIBSE committees and on the advisory panel of the internationally renowned journal Lighting Research and Technology. He is an active member of the Professional Lighting Design Association (a global organisation that is dedicated to promoting the profession of lighting design) and is currently the President of the association.

Martin started Light Collective with Sharon Stammers in order to create the next generation of lighting consultancy, one that looks at all aspects of light with an intense focus on collaboration and creativity.

Martin has an extensive experience in all areas of lighting design including urban lighting and masterplanning.

Urban

- **Liverpool ONE**
Project Director for lighting strategy implementation for £935M city centre redevelopment.
- **Chichester Town Centre**
Lighting strategy for historic centre of Chichester.
- **Bognor Regis High Street Regeneration**
Project Director for the lighting design for the regeneration of Bognor Regis High Street.
- **Playhouse Square, Nottingham**
Lighting Design for redesign of the public square including the Sky Mirror by Anish Kapoor.
- **Cornmill Gardens, Lewisham**
Project Director for new public open space and park within the town centre.
- **Princesshay Exeter, The Almhouses**
Design of a lighting scheme for a retail led urban regeneration of Princesshay in Exeter. Lighting to external space, building facades and art installations.
- **Walthamstow High Street, Town Square and Gardens**
Lighting scheme designed as part of regeneration of Walthamstow High Street including lighting to footpaths, stage, playground and iconic feature column.

Heritage

- **Royal Albert Hall, London**
Façade lighting of the exterior.
- **Cutty Sark, Greenwich, London**
Project Director for the lighting of the Cutty Sark and temporary exhibition space.
- **Kelvingrove Art Gallery and Museum, Scotland**
Architectural lighting design for £31M refurbishment of museum and art gallery

Retail

- **Chapelfields, Norwich**
Interior and exterior lighting design for a large city centre brown field retail development. .
- **Bradwells Court, Cambridge**
Lighting design for new street and public square in the centre of Cambridge includes dynamic lighting to a 60m long public art installation, wall of words by Jane Watt.
- **Cardinal Place, London**
Major new office development with landscaped ornamental gardens and exterior retail space.
- **St David's Centre, Cardiff**
Project Director for the lighting design of a retail led urban regeneration of Cardiff City Centre.

Light Installations

- **Transitions**
Interactive LED light installation inside sea container as part of Philips touring exhibition.
- **Maggies 2008, Marble Arch London**
Live image projection onto Marble Arch with light writing
- **Maggies 2009, Battersea Power Station**
Dynamic lighting installation for turbine hall and lo-fi interactive light installation.

Public Buildings

- **Ruthin Centre for the Applied Arts**
Lighting design to gallery spaces, workshops and cafe in custom designed building by Sergison Bates Architects.
- **Westminster Academy**
Artificial and natural lighting design to Stirling Prize shortlisted building in West London.

Sharon started her career in stage lighting, working as a production electrician, a technical manager and a lighting designer for a variety of companies, tours and venues from 1992 to 1996.

In October 1996 she began her career in architectural lighting and joined highly regarded Lighting Design Partnership as an assistant designer where she worked on a variety of prestigious projects with a number of highly experienced lighting designers.

In July 2000 two of the principles of LDP went on to form Phoenix Large Lightmatters. Sharon joined Lightmatters and was made an Associate in 2001.

Sharon has been project designer on a wide range of projects such as the exterior of Somerset House and the fountains within the Great Court. The fountains won a Highly Commended at the National Lighting Awards in 2002. Her theatre work includes the Prince of Wales Theatre and the refurbishment of the Coliseum Theatre in London and museum projects include The Playfair Project in Edinburgh and The Chinese Gallery at the Ashmolean Museum, Oxford. More contemporary projects include the Westin Hotel in Warsaw and Heron Quays DLR station.

Sharon left Lightmatters in Feb 2006 and has since headed the UK office of PLDA, supporting and developing the Association in both the UK and overseas. PLDA is a global organisation dedicated to promoting lighting design. Sharon also currently holds the role of Key practitioner on the BSc Lighting Design course at Rose Bruford College.

Sharon joined Martin to form Light Collective in order to create the next generation of lighting consultancy, one that looks at all aspects of light with an intense focus on collaboration and creativity.

**LIGHT
COLLECTIVE**

Urban

- **Theatreland, London**
Lighting strategy to create identity and improve general urban lighting
- **'River of Light', Liverpool**
Lighting strategy linking buildings along the Mersey
- **Minehead Foreshore, Somerset**
Regeneration scheme to light seafront
- **Scarborough Lighting Strategy**
Implementation of strategy – Projects include Castle Walls, Library Market Hall, Lighthouse, Tollhouse, Churches and Museum
- **Scarborough Foreshore, Yorkshire**
Seafront scheme including beach floodlighting, path, road and decorative lighting.

Heritage

- **Somerset House, London**
Façade lighting of the Great Court, Strand elevation and lighting of the fountains
- **City Walls, Chester**
Concept scheme for illumination of city walls
- **National Maritime Museum/Royal Naval College**
Concept architectural lighting scheme for entire site

Cathedrals

- **Peterborough Cathedral**
Interior relighting
- **Southwell Minster**
Interior relighting
- **St Paul's Cathedral**
Assistant work on interior lighting within the Crypt areas

Leisure

- **Westin Hotel, Warsaw, Poland**
Interior and exterior – New build major hotel
- **Al Azhar Park, Cairo**
Exterior lighting for landscaping and water features
- **Ilion Leisure Centre, Athens, Greece**
Exterior lighting - Mixed-use centre
- **Aurora**
Interior lighting to public areas - P&O cruise liner
- **Mariott Hotel, Cairo**
Interior and exterior lighting – New build
- **Sarner International**
Interior exhibition lighting - Theme experience for Baileys
- **Indira Ghandi National Centre for Arts, Delhi**
Assistant design work on large arts complex

Miscellaneous

- **Heron Quays, London**
Architectural lighting for Dockland Light Railway station
- **Centrepont, London**
Foyer and entrance plaza for office block
- **Gatwick Lighting Strategy**
Assistant work on airport lighting study and proposals

Galleries

- **Playfair Project, Edinburgh**
Interior and exterior lighting – Refurbishment of the Royal Scottish Academy.
- **Dulwich Picture Gallery, London**
Interior and exterior lighting - Original Soane Building and new build areas
- **Hermitage Rooms, London**
Exhibition and display case lighting - New gallery created within Somerset House

light |līt|

~noun

- the natural agent that stimulates sight and makes things visible: *the light of the sun | the street lamps shed a faint light into the room.*
- a source of illumination, esp. an electric lamp: *a light came on in his room.*
- understanding of a problem or mystery; enlightenment: *she saw light dawn on the woman's face.*
- the amount or quality of light in a place: *the plant requires good light | in some lights she could look beautiful.*
- electromagnetic radiation whose wavelength falls within the range to which the human retina responds.

~adjective

- having a considerable or sufficient amount of natural light; not dark: *the bedrooms are light and airy | it was almost light outside.*
- (of a color) pale : *her eyes were light blue.*

col·lec·tive |kə'lektiv|

~noun

- a business, farm, etc., jointly owned and operated by the members of a group.
- a unit of organization or the organization in a collectivist system.

~adjective

- formed by collection.
- forming a whole; combined: *the collective assets.*
- of or characteristic of a group of individuals taken together: *the collective ideas.*
- organized according to the principles of collectivism.

**LIGHT
COLLECTIVE**

95 Bryanston Road, Solihull,
West Midlands. B91 1BS

0044 7515 56 97 82

66 Avignon Road
London, SE42JT

0044 7932612052